

## Rules to Remember

### On the Roads

- Only licensed drivers and street-legal vehicles are allowed on county roads and the following DNR management roads: Goat Ranch, South Spillman, Twin Lakes, Bennettsen Lake, Hurd, and Scarification.
- Forest management road speed limit is 25 mph.
- Speed limit in camp and picnic sites is 5 mph.
- Logging trucks, heavy equipment and other vehicles use these roads.

### On the Trails

- Stay on only signed, approved trails.
- Approved trails are signed and unsigned trails are CLOSED.
- All Off-road vehicles must have:
  - Vehicle license or ORV permit tag
  - USFS -approved spark arresting muffler for ORVs
- Respect the rights of others on trails: hikers, equestrians, bikers, 4x4s and ATVs.
- Use caution -- trails are two way.
- Do not ride in streams, on road embankments, lake-shores, or wetlands.
- Watch for unmarked hazards on trails.
- Consider nearby homeowners: motorized night riding is not allowed.

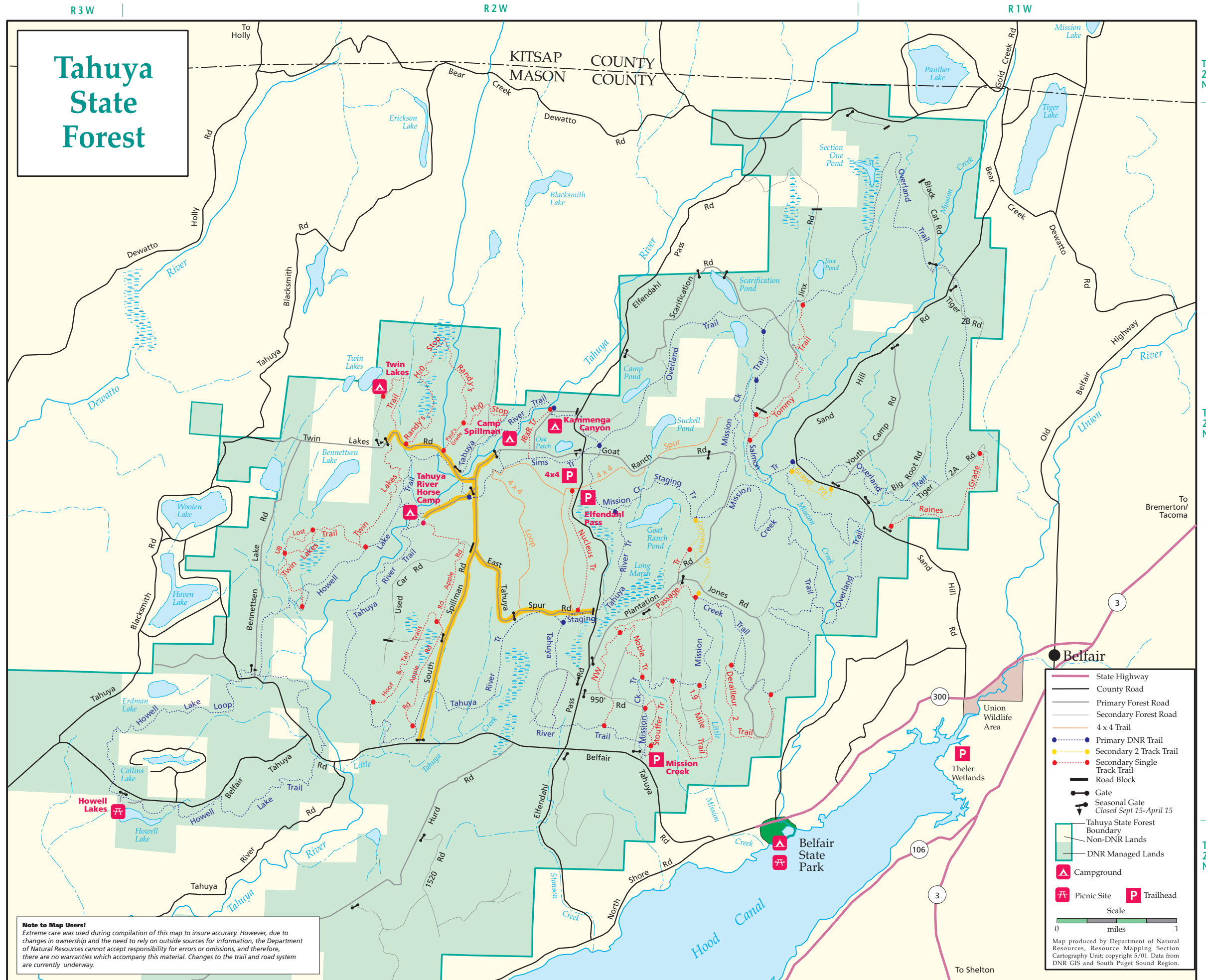
### In the Campsites

- Self register if staying overnight.
- Camp in designated campsites only.
- Do not alter or remove vegetation.
- Remove your garbage and litter.
- No camping in day-use areas.
- Restrict fires to campsite fireplaces.
- Maintain quiet between 10 p.m. and 6 a.m.
- Limit your stay to 14 days.

**Note:** Don't shoot in or near recreation sites, trails, or roads. This is a heavily-used forest.

**Caution:** Map shows most of the approved trails. Single Track Primitive Trails are not shown.

**For events of more than 25 people, a DNR permit is required.** Call South Puget Sound Region Office at (360) 825-1631.



Access recently modified